

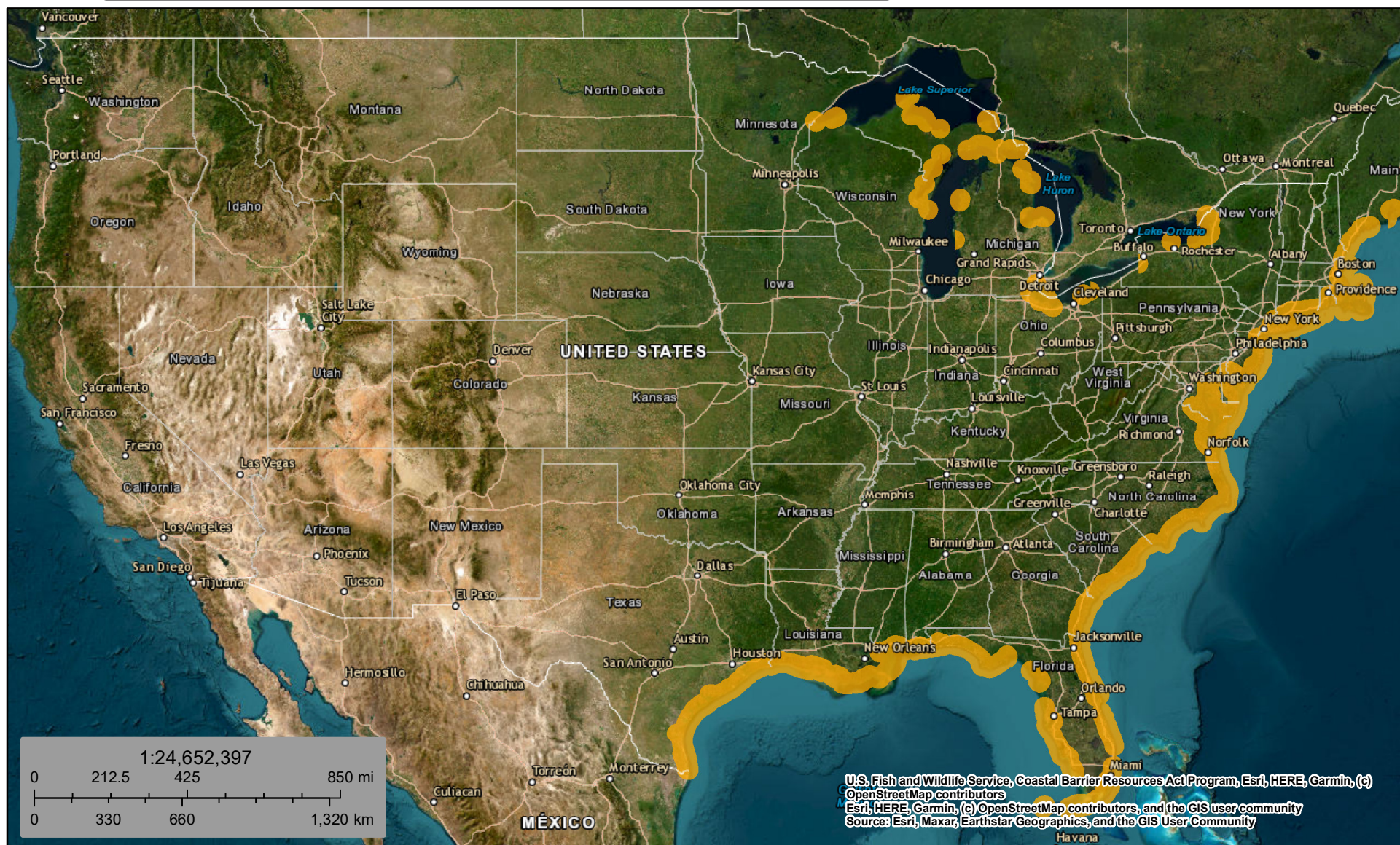
ATTACHMENT 2

Coastal Barrier Resources System Maps



U.S. Fish and Wildlife Service Coastal Barrier Resources System

United States



December 17, 2024

Generalized Units

This map is for general reference only. The Coastal Barrier Resources System (CBRS) boundaries depicted on this map are representations of the controlling CBRS boundaries, which are shown on the official maps, accessible at <https://www.fws.gov/library/collections/official-coastal-barrier-resources-system-maps>. All CBRS related data should be used in accordance with the layer metadata found on the CBRS Mapper website.

The CBRS Buffer Zone represents the area immediately adjacent to the CBRS boundary where users are advised to contact the Service for an official determination (<https://www.fws.gov/service/coastal-barrier-resources-system-property-documentation>) as to whether the property or project site is located "in" or "out" of the CBRS.

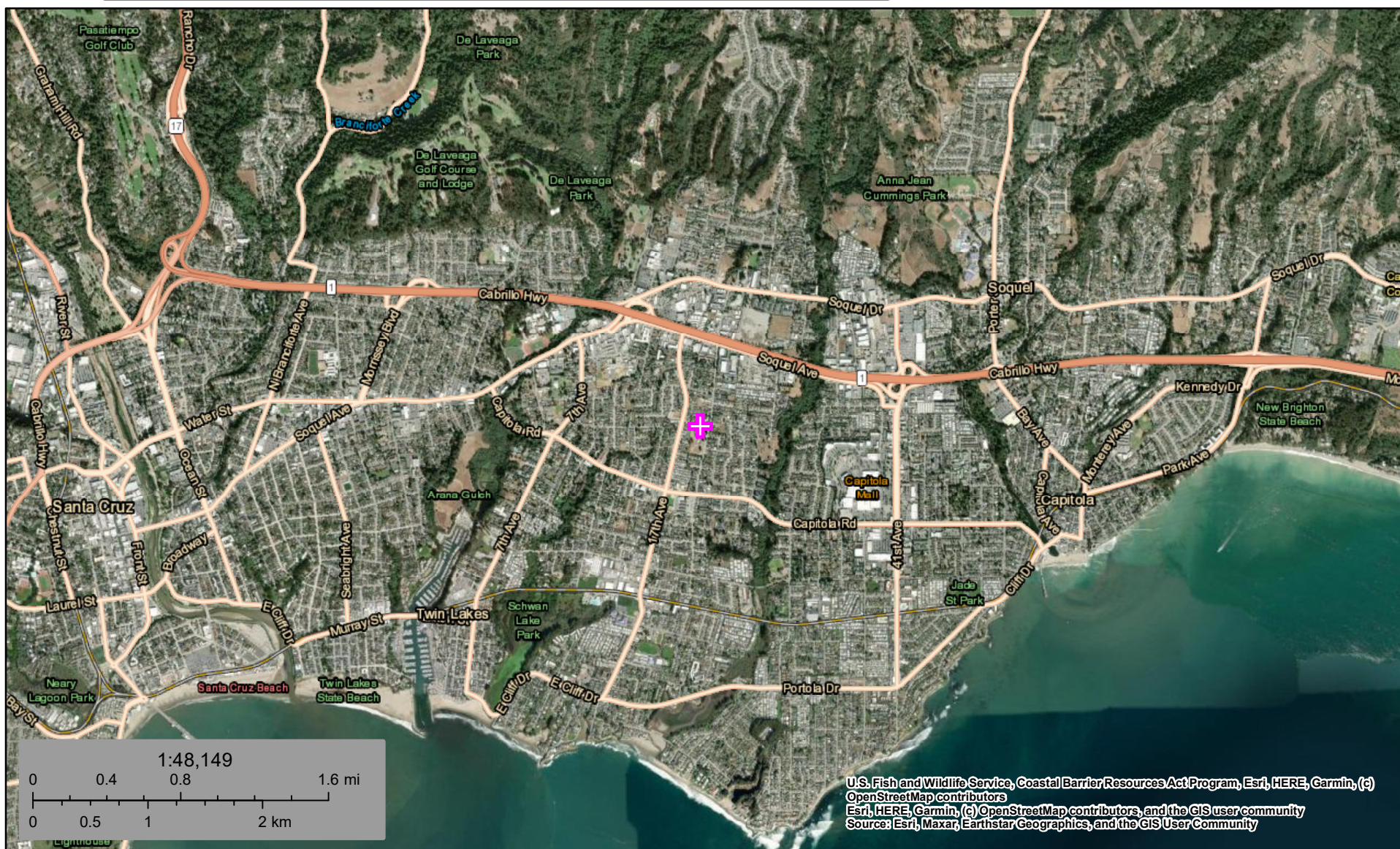
CBRS Units normally extend seaward out to the 20- or 30-foot bathymetric contour (depending on the location of the unit). The true seaward

This page was produced by the CBRS Mapper



U.S. Fish and Wildlife Service Coastal Barrier Resources System

Project Site





December 17, 2024

 CBRS Buffer Zone

 Project Site

CBRS Units

 Otherwise Protected Area
 System Unit

This map is for general reference only. The Coastal Barrier Resources System (CBRS) boundaries depicted on this map are representations of the controlling CBRS boundaries, which are shown on the official maps, accessible at <https://www.fws.gov/library/collections/official-coastal-barrier-resources-system-maps>. All CBRS related data should be used in accordance with the layer metadata found on the CBRS Mapper website.

The CBRS Buffer Zone represents the area immediately adjacent to the CBRS boundary where users are advised to contact the Service for an official determination (<https://www.fws.gov/service/coastal-barrier-resources-system-property-documentation>) as to whether the property or project site is located "in" or "out" of the CBRS.

CBRS Units normally extend seaward out to the 20- or 30-foot bathymetric contour (depending on the location of the unit). The true seaward

This page was produced by the CBRS Mapper